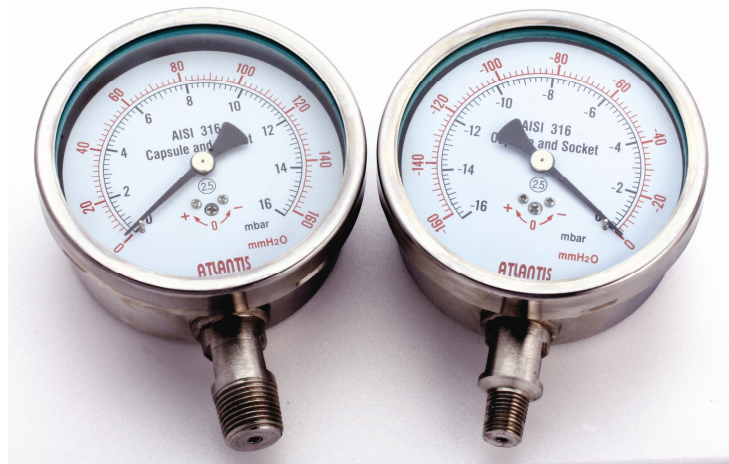


# ALL STAINLESS STEEL CAPSULE PRESSURE GAUGE

## MP-SUS series

### APPLICATIONS

- ◆ Measure low and extremely low positive or negative pressure.
- ◆ MP-SUS series can be used with corrosive gases, which is compatible with stainless steel.
- ◆ Generally used in pharmaceutical industry, leakage tests, filter monitor, exhaust gas measurement, air-conditioner, and laboratory.



### SPECIFICATIONS

<b>Dial Diameter</b>	2.5" (63mm) ; 4" (100mm) ; 6" (150mm)
<b>Mounting Type</b>	Direct mounting (Type A) – bottom connection without flange Wall mounting (Type B) – bottom connection with back flange(only for Φ4" or 6") Back mounting (Type AD) – back connection without frange Panel mounting (Type BD) – back connection with front flange
<b>Case</b>	Stainless steel 304, IP54, bayonet bezel (option : IP65 upon request)
<b>Lens</b>	Standard : Glass ; Option : Plastic or safety glass
<b>Dial</b>	Aluminum, black and red markings on white background, dial arc 270°
<b>Measuring principle</b>	Capsule, stainless steel 316
<b>Movement</b>	Standard : SUS316 ; Option : Brass
<b>Pointer</b>	Aluminum, black
<b>Connection</b>	Male thread 1/4" ; 3/8" ; 1/2" PT(BSPT) / NPT / PF(BSP), stainless steel 316 <other sizes are available upon request>
<b>Filling (option)</b>	Silicon oil, only available for range $\geq$ 2500 mmH <sub>2</sub> O
<b>Adjustment</b>	Adjustment screw on the dial, allowing correction of $\pm$ 10% F.S.(only for Φ4" or 6")
<b>Accuracy</b>	$\pm$ 4% F.S. (for Φ2.5") ; $\pm$ 2.5% F.S. (for Φ4" or 6") standard Option : $\pm$ 2.5% F.S. for Φ2.5" ; $\pm$ 1.6% F.S. for Φ4" or 6"
<b>Temperature</b>	Medium +100°C ; ambient -25 to +65°C
<b>Ranges</b>	positive, negative or compound 0 / 160 ~ 0 / 6000 mmH <sub>2</sub> O (second scale : mbar) <other units are available>

### HOW TO ORDER (Please specify additionally the special custom-made specifications)

